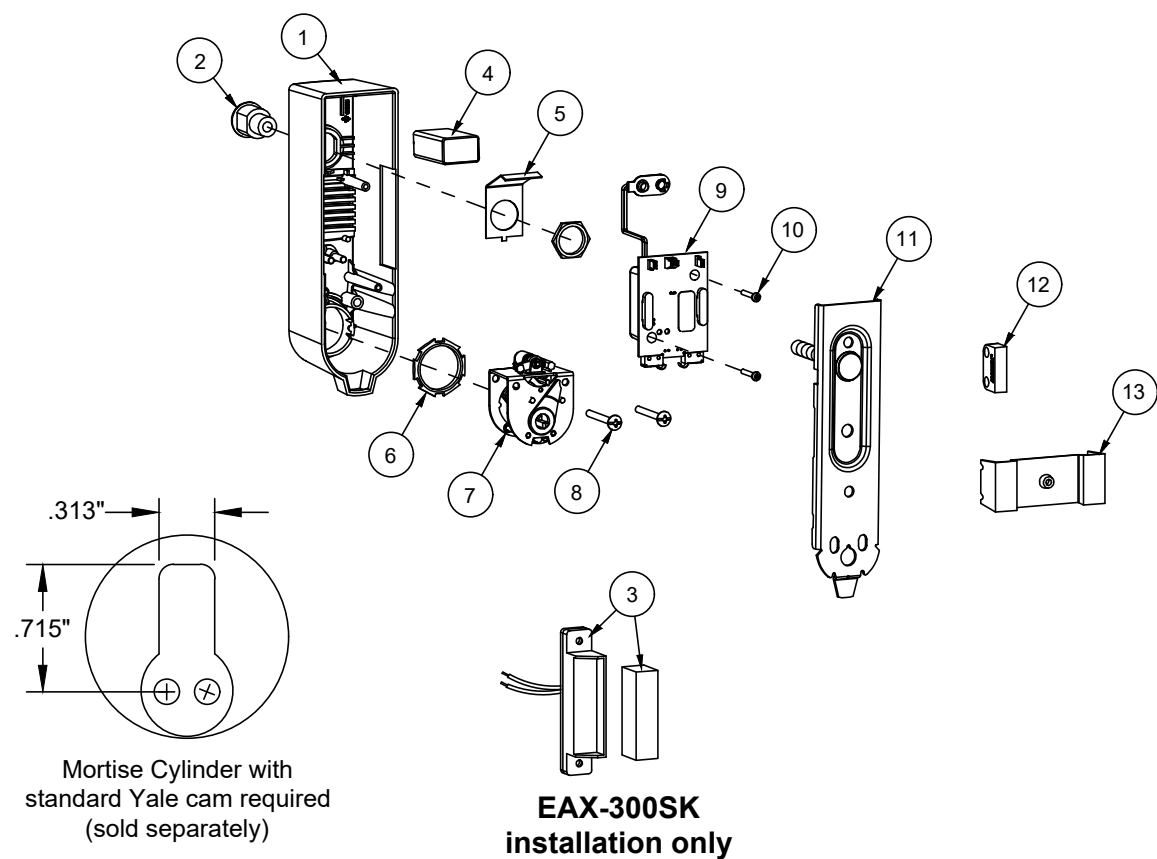




Parts List

EAX-300



| Item | Order Part # | Description | List Price |
|------|--------------|--|------------|
| 1 | 105428-1 | Cover, Gray | \$93.96 |
| | 105428-2 | Cover, black | \$82.08 |
| 2 | PP-5572 | Cover Lock, Nut & 2 Keys | \$17.00 |
| 3 | MS-1039S | Mag Switch (surface mount) (see STEP 8) | \$88.00 |
| 4 | PP-5567 | 9 Volt Battery | \$12.00 |
| 5 | 102606 | Battery Retainer | \$2.94 |
| 6 | 100783 | Cylinder Hex Nut | \$9.00 |
| 7 | 102655 | Cam Assembly Kit | \$42.12 |
| 8 | 102627-15 | 8-32 Truss Head Screw | \$1.24 |
| 9 | 105828-1 | S & R Circuit Board Kit, Standard | \$206.64 |
| | 105837-1 | S & R Circuit Board Kit, Weatherized | \$261.12 |
| 10 | 102789-1 | Screw, SMS, #4 x 1-1/4" PFH | \$0.35 |
| 11 | 102715 | Backplate | \$12.47 |
| 12 | 102665 | Magnet Kit | \$10.21 |
| 13 | 102607 | Magnet Locator | \$1.47 |
| 14 | 102633 | Hardware Kit (includes keystop parts)(not shown) | \$29.16 |