



Detex Corporation, 302 Detex Drive, New Braunfels, Texas 78130-3045
830-629-2900 / 800-729-3839 / Fax 800-653-3839 / Text photos only: 830-481-6433 / INTERNET: www.detex.com

INSTALLATION INSTRUCTIONS FOR THE ECL-620 OUTSIDE LEVER TRIM FOR ECL-600

ECL™
Drawing: 107560

Table of Contents	Page
Device parts breakdown & part number list.....	2
Hardware list, drill schedule & tools required.....	3
Trim preparation.....	4
Inside of door mark & drill holes using template.....	5
Backplate preparation.....	5
Outside of door mark & drill holes using template.....	6
Backplate & trim installation.....	7
Relatching assembly installation.....	7
Mechanism assembly installation.....	8
Inside door hole template.....	9
Outside door hole template.....	10

Should you have a Question/Problem with your Detex device please call Detex Technical Support from the job site at 1-800-729-3839 and choose option 2 on our menu. Please do not return the product to the distributor.

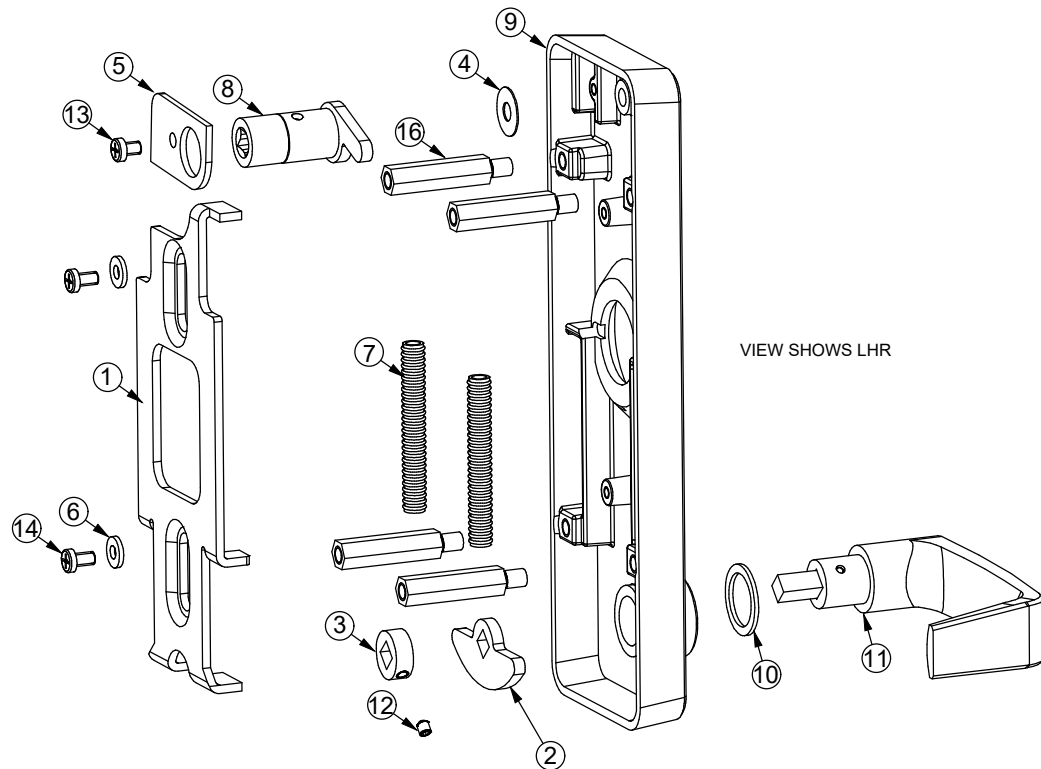
For **WARRANTY** information,
scan code below or
go to www.detex.com/warranty



Owner's Copy

For device installation videos,
scan code below or
go to www.detex.com/videos


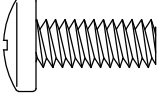
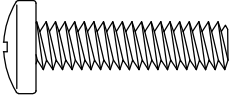
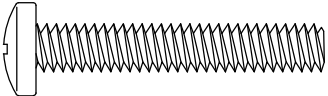




Your particular part or configuration may not be shown: Contact Detex technical support at 800-729-3839 (option 2)

ITEM	PART	QTY	DESCRIPTION
1	100661	1	YOKE, LIFTING
2	100668	1	CAM, BOTTOM
3	100669	1	COLLAR, LOCKING
4	100676	1	WASHER, FLAT, .260 x .687 x .02 NYLON
5	100678	1	PLATE, RETAINING
6	100681	2	WASHER, FLAT, .188 x .438 x .065 S.S.
7	100682	2	SPRING, COMPRESSION, YOKE
8	100687	1	TOP CAM SUBASSEMBLY
9	100693	1	ESCUTCHEON COLLAR SUBASSEMBLY
10	100851	1	WASHER, FLAT, .755 x 1.00 x .060 S.S.
11	100981	1	LEVER SUBASSEMBLY
12	PP-5187-5	1	SCREW, SET 8-32 x 3/16
13	PP-5378-104	1	SCREW, MACH. 8-32 x 1/4 PPH
14	PP-5378-105	2	SCREW, MACH 8-32 x 5/16 PPH
15	PP-5749	1	CARTON, PACKING
16	100777	4	STANDOFF, HEX

Hardware for mounting the **TRIM** to the door.
Additional hardware is provided in the ECL-600 device

	Fastener Part No	Drill Bit 
	P/N: 100110 1/4-20 x 5/8" PPH	#7 or 13/64"
	P/N: 100980 1/4-20 x 1" PPH	#7 or 13/64"
	P/N: 100954 1/4-20 x 1-1/2" PPH	#7 or 13/64"

Drill & Tap Schedule A

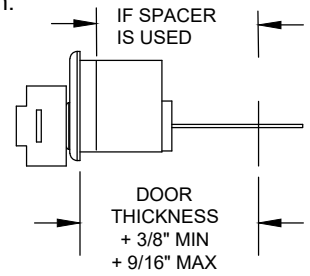
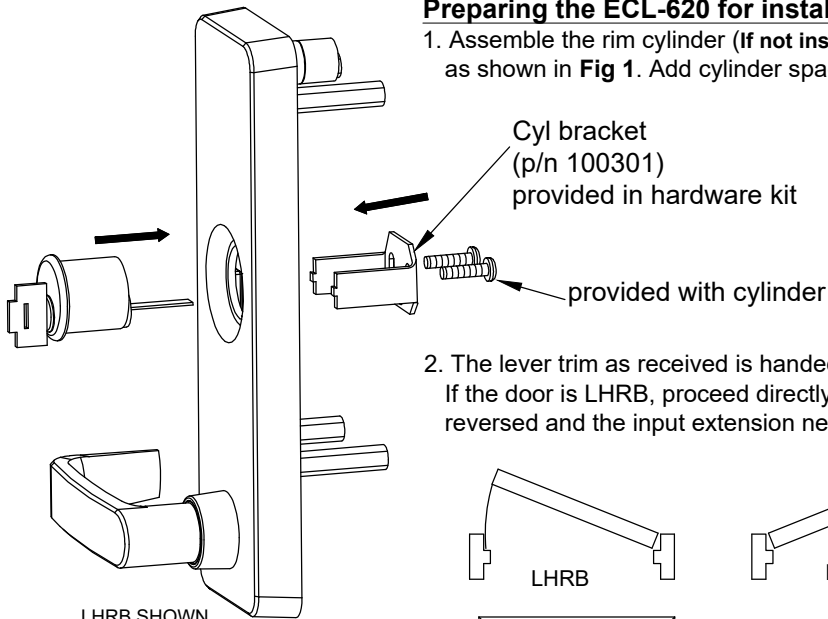
Frame Holes	Wood Frame	Metal Frame	
A. (2 ea)	#14 Screws 3/16 Drill	#14 Screws #9 Drill	or 1/4-20 Machine screws #7 Drill; 1/4-20 Tap
B. (4 ea)	#10 Screws 1/8 Drill	#10 Screws #25 Drill	10-24 Machine screws #25 Drill; 10-24 Tap
Door INSIDE holes	Wood Door	Metal Door	
C. (6 ea) (holes 5,6,7,9,10,11)	#14 Screws 3/16 drill	#14 Screws #9 Drill	or 1/4-20 Machine screws #7 Drill; 1/4-20 Tap
D. (4 ea) (holes 1,2,3,4,)	#24, #25 or 9/64" drill bit (pilot thru hole) NOTE: Center of "E" holes CRITICAL TO DRILL STRAIGHT	SAME	
E. (4 ea) (holes 1,2,3,4)	1/2" wood bit HALFWAY thru door	1/2" drill bit HALFWAY thru door	or 1/2" hole saw HALFWAY thru door
F. (1 ea)	1/2" wood bit HALFWAY thru door	1/2" drill bit HALFWAY thru door	or 1/2" hole saw HALFWAY thru door
G. (1 ea)	1" wood bit THRU door	1" hole saw THRU door	
H. (2 ea) OPTIONAL FOR MULLION	#10 screws 1/8 drill	#10 screws #25 drill	or 10-24 machine screws #25 drill; 10-24 tap
Door OUTSIDE holes	Wood Door	Metal Door	
Locate the remaining "D" pilot holes on the outside face of door	1 1/2" wood bit at least 1 1/8" deep, but NOT THRU	1 1/2" hole saw at least 1 1/8" deep, but NOT THRU	
J. (1 ea)			

TOOLS REQUIRED

Pencil Adhesive Tape Center Punch Hammer Drill Motor Tape Measure Screw Driver (Phillips Drive)
Drill Bits & Taps - See Drill & Tap Schedule A (pg. 3)

Preparing the ECL-620 for installation

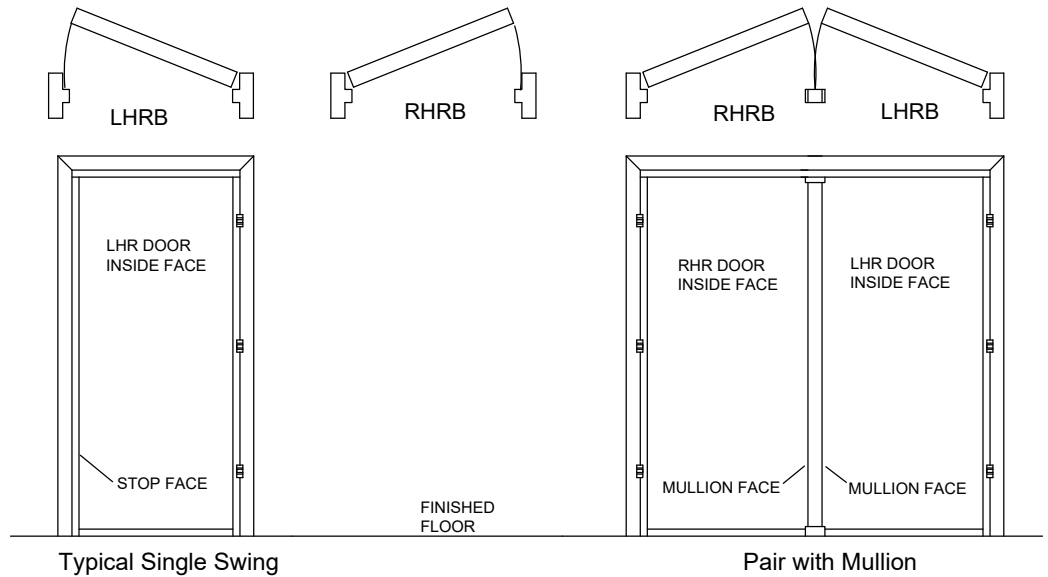
1. Assemble the rim cylinder (If not installed) through the escutcheon and the cylinder retaining bracket as shown in Fig 1. Add cylinder spacer or cut the tailpiece as shown.



2. The lever trim as received is handed for LHRB (Left Hand Reverse Bevel) doors.

If the door is LHRB, proceed directly to step 3. If the door is a RHRB, then the lever needs to be reversed and the input extension needs to be moved from position A to position B. (See below).

LHRB SHOWN
Fig. 1



To do so:

- Remove the lever input extension from position A by first loosening its' setscrew. (See Fig 2)
- Remove, likewise, the short locking collar at position B and discard it.
- Remove screw and discard the retaining plate, screw and the **loose** parts under the retaining plate.
- Remove lever from collar and rotate the lever 180°. Reinstall it through the butterfly cam.

Secure the lever by tapping down the lever input extension taken from position A, onto the square shaft of the lever and tighten the set screw.

When installed, the free end of the lever will point toward the hinged side of the door, not the strike.

The outside lever trim is now completely assembled.

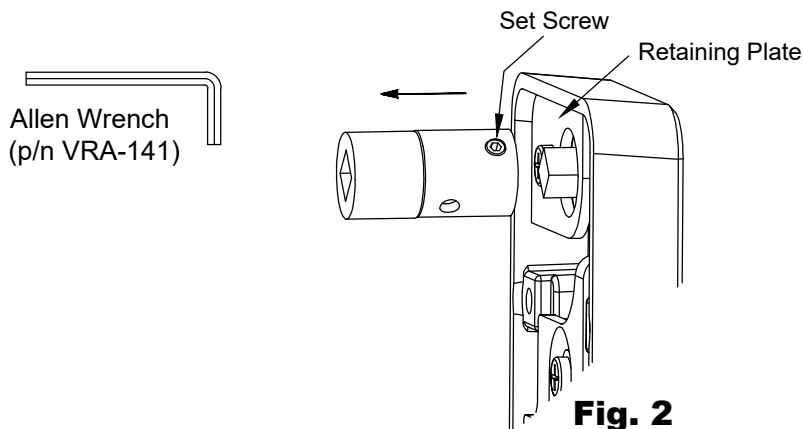


Fig. 2

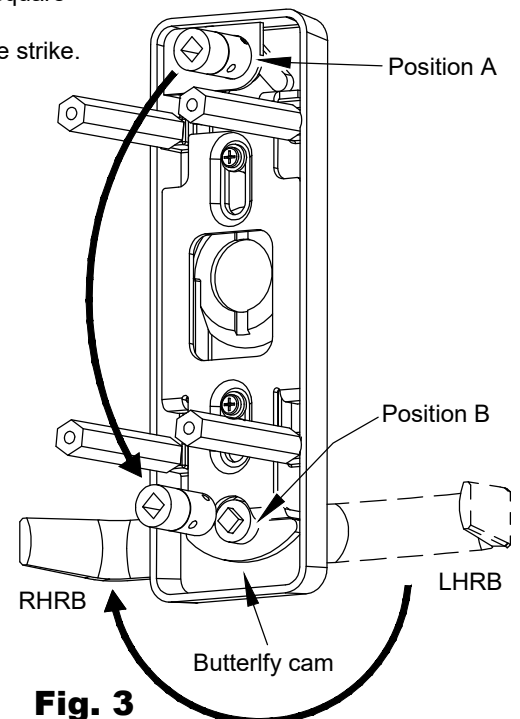


Fig. 3

LHR
INSTALLATION
SHOWN

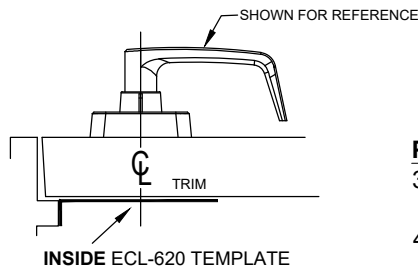


Fig. 4

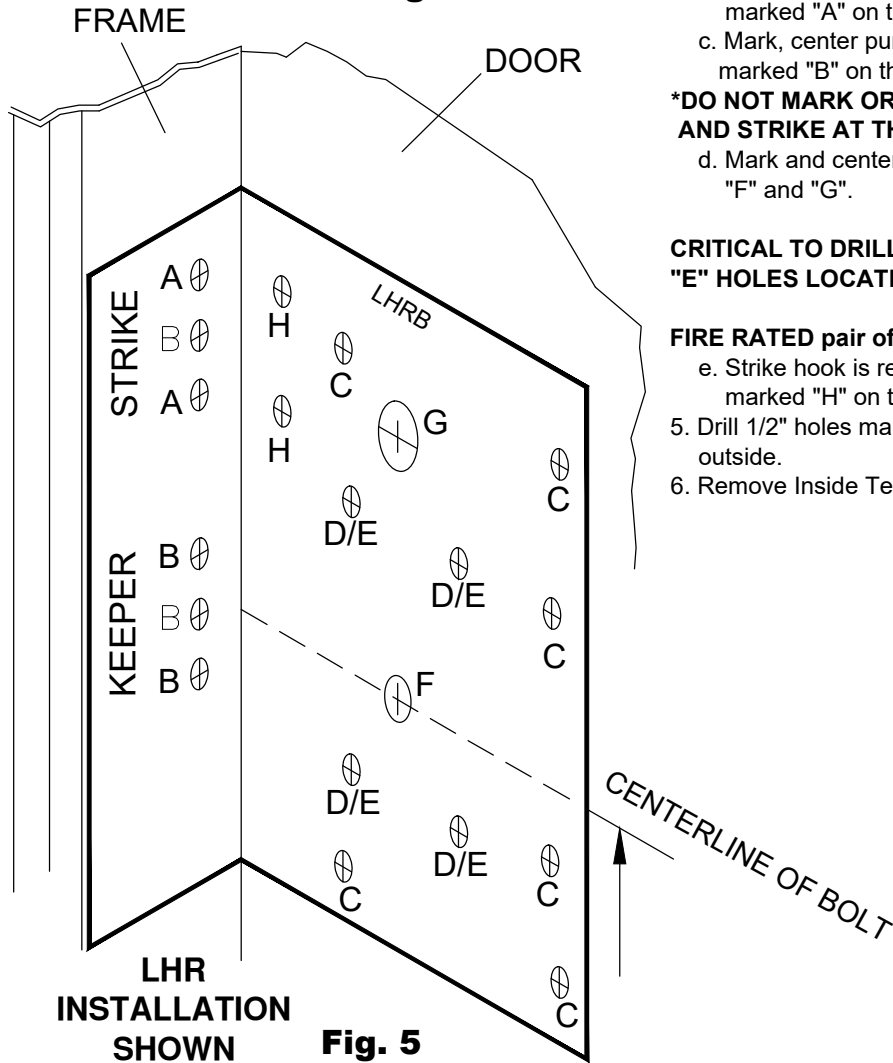
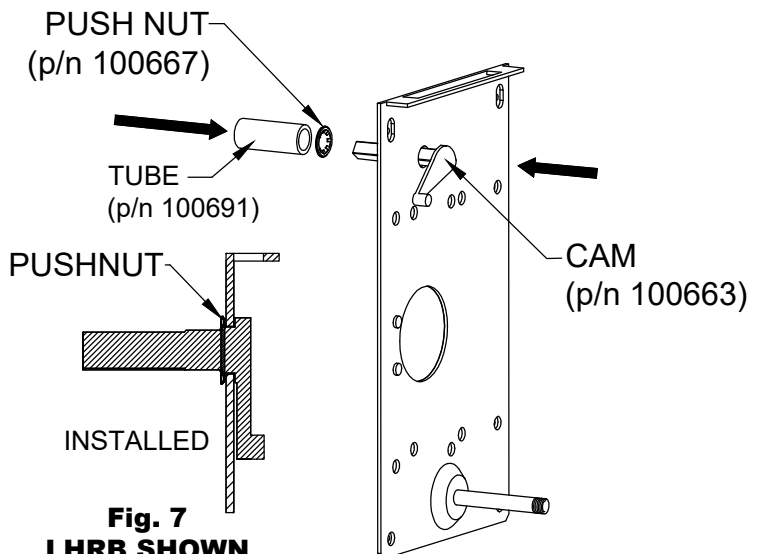


Fig. 5

PREPARING ECL-600 BACKPLATE FOR THE ECL-620 - Fig 7

7. Install the input lever cam onto the backplate with the push nut, using disposable tube as shown. Discard the tube after use. Cam, push nut and tube are provided in the hardware kit.



**Fig. 7
LHRB SHOWN**

NOTICE:

WHEN PRINTING TEMPLATES FROM THE WEB SITE, CHANGE PRINTER SETTINGS TO "PRINT TO FULL SIZE" (100%).

DO NOT SCALE TO FIT

Preparing the Door & Frame

3. Orient the **INSIDE** template TPL-620 for proper door handing and tape to door per Fig 4. See Fig 5 for hole locations.
4. Refer to Drill & Tap Schedule A (page 2):
 - a. Mark, center punch and drill six (6) holes marked "C" on the door.
 - b. Mark, center punch, drill and tap the two (2) **outer** holes of the strike, marked "A" on the frame.
 - c. Mark, center punch, drill and tap the two (2)* **outer** holes of the keeper, marked "B" on the frame.
- ***DO NOT MARK OR DRILL CENTER HOLES MARKED "B" ON KEEPER AND STRIKE AT THIS TIME.**
- d. Mark and center punch then drill with pilot drill bit, the holes marked "D/E", "F" and "G".

**CRITICAL TO DRILL STRAIGHT AND LEVEL AS POSSIBLE.
"E" HOLES LOCATE THE TRIM.**

FIRE RATED pair of doors with mullion:

- e. Strike hook is required. Mark, center punch, drill and tap the two (2) holes marked "H" on the door.
5. Drill 1/2" holes marked "E" and "F" **halfway** through door from inside to outside.
6. Remove Inside Template TPL-620 from face of door and discard.

PREPARING THE OUTSIDE OF DOOR - Fig. 8

8. Place **OUTSIDE** template (TPL-620), align 4 holes marked "E" with pilot holes "D" and secure with tape.
9. **Ensure proper handing before proceeding.**
10. Drill 1" hole marked "G" through door.
11. Mark, center punch and drill 1-1/2" hole marked "J" at least 1-1/8" deep from **OUTSIDE** to inside, but do not drill through.
12. Locate 4 existing pilot holes marked "E" and drill Ø1/2" hole through door.
13. Remove template TPL-620 and discard.

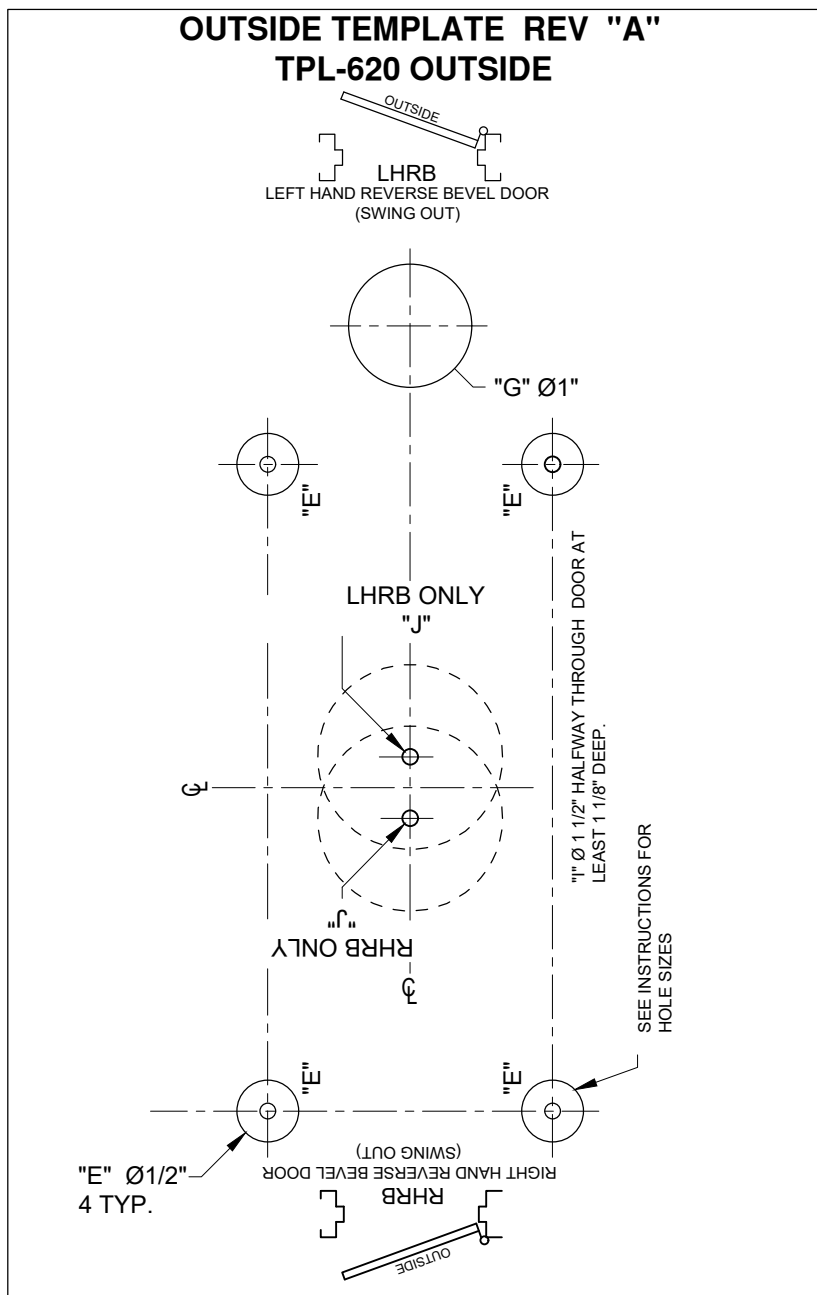


Fig. 8

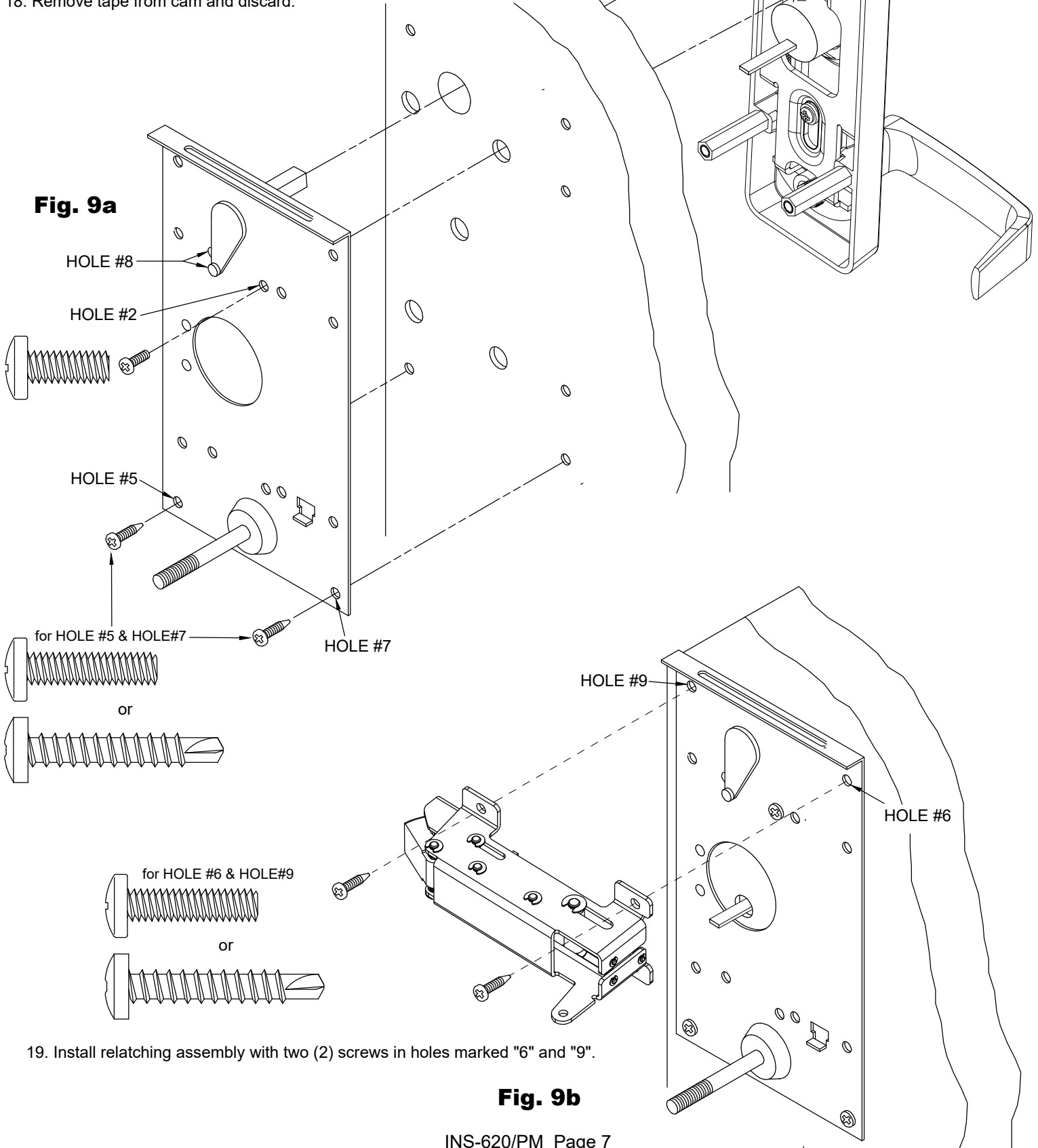
INSTALLATION

Fig. 9a & 9B

14. Install backplate onto the door. Secure with two (2) screws in holes marked "5" and "7".
15. Align cam with hole marked "8" and tape to secure.
16. Insert ECL-620 LEVER TRIM into hole on door. Align key cylinder tailpiece through door.
Align input extension with lever input cam.

TIP: Rotating trim lever back and forth and moving backplate facilitates alignment.

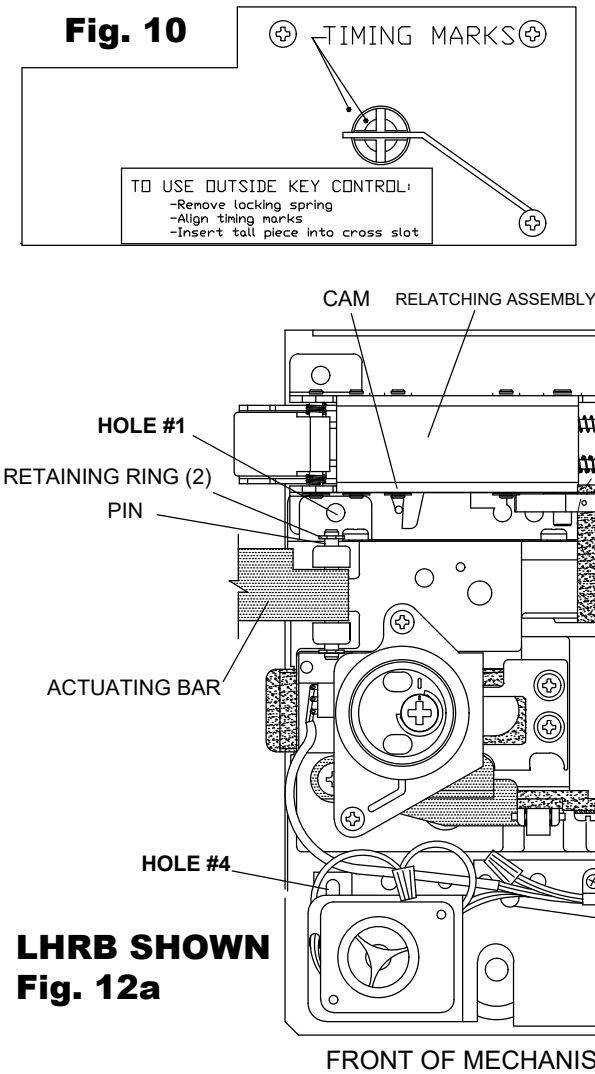
17. Install short 1/4-20 machine screw through hole marked "2".
18. Remove tape from cam and discard.



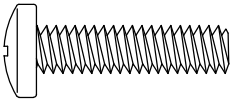
19. Install relating assembly with two (2) screws in holes marked "6" and "9".

Fig. 9b

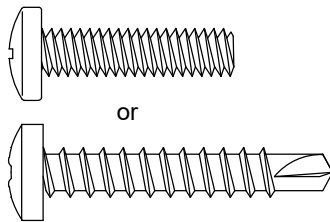
Fig. 10
20. Remove OKC retaining spring and align marks.



for HOLE #1, HOLE#3 & HOLE#4



for HOLE #10 & HOLE#11



ADJUSTABLE MOUNTING PLATE

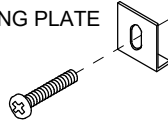


Fig. 11
21. Engage alignment bolt on mechanical assembly with alignment hole on relatching assembly as shown in Detail 1

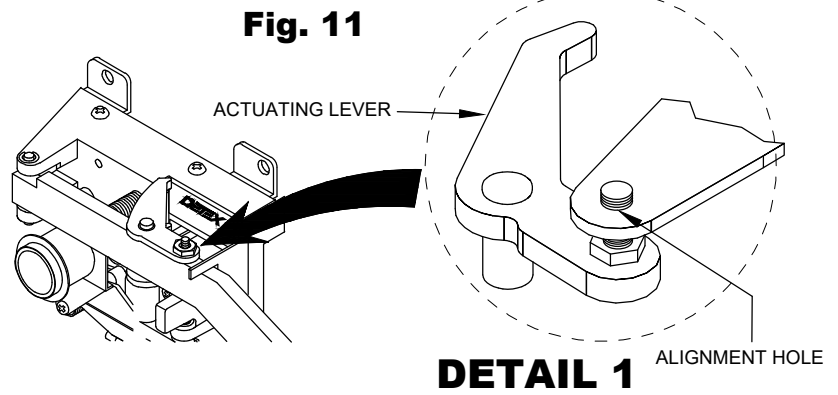
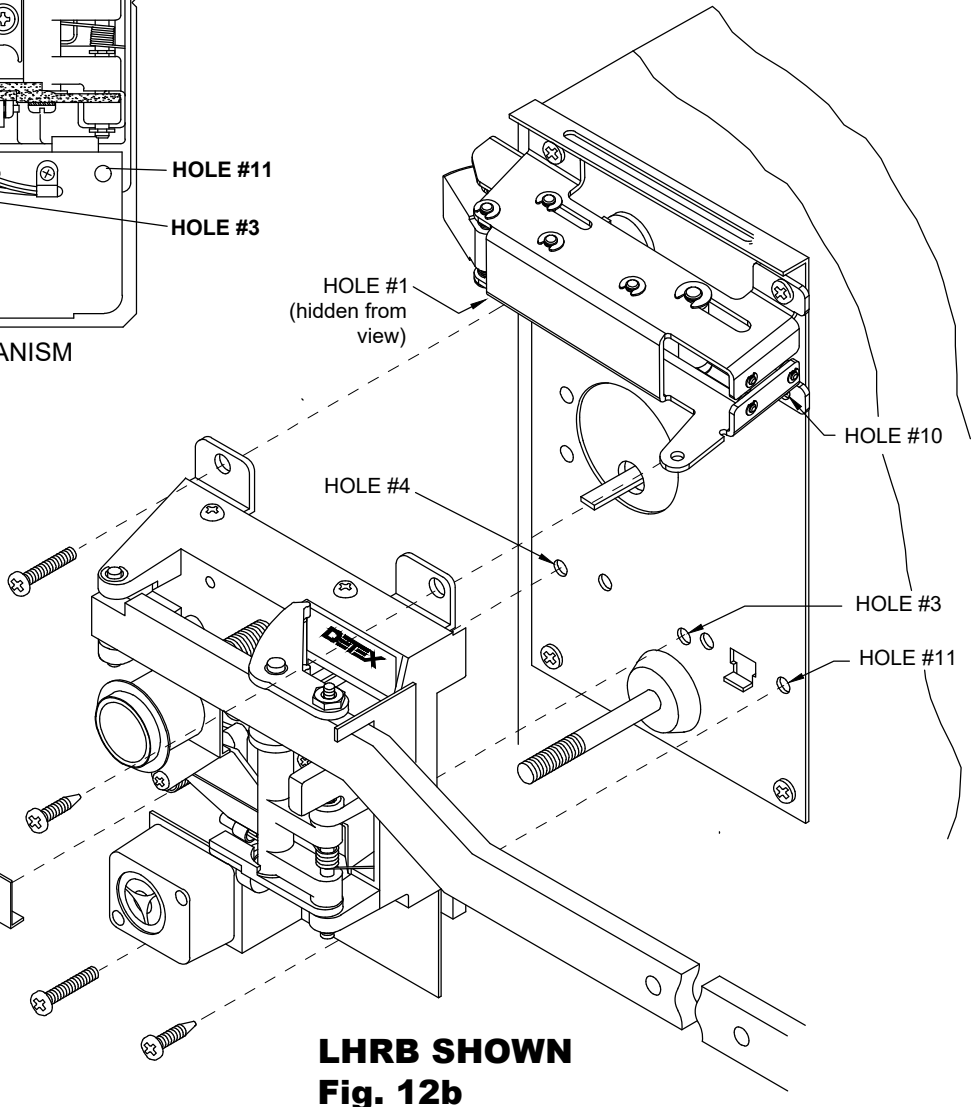


Fig. 12a & 12b
22. Install mechanical assembly with screws in holes marked "1, 10, 11 and 3".
23. Install adjustable mounting plate in hole marked "4".
24. Install actuating bar and lever.
25. Lubricate mechanism.



Continue on with INS-600/PM instruction for all other information on installation of strike & keeper, cylinder, pushbar, battery, sign, cover, lubrication and testing/troubleshooting.

OUTSIDE TEMPLATE REV "A" TPL-620 OUTSIDE

NOTE:
DIMENSIONS MAY NOT BE ACCURATE
WHEN PRINTING FROM WEBSITE.
PLEASE CONFIRM DIMENSIONS
WITH RULER BEFORE USE.

