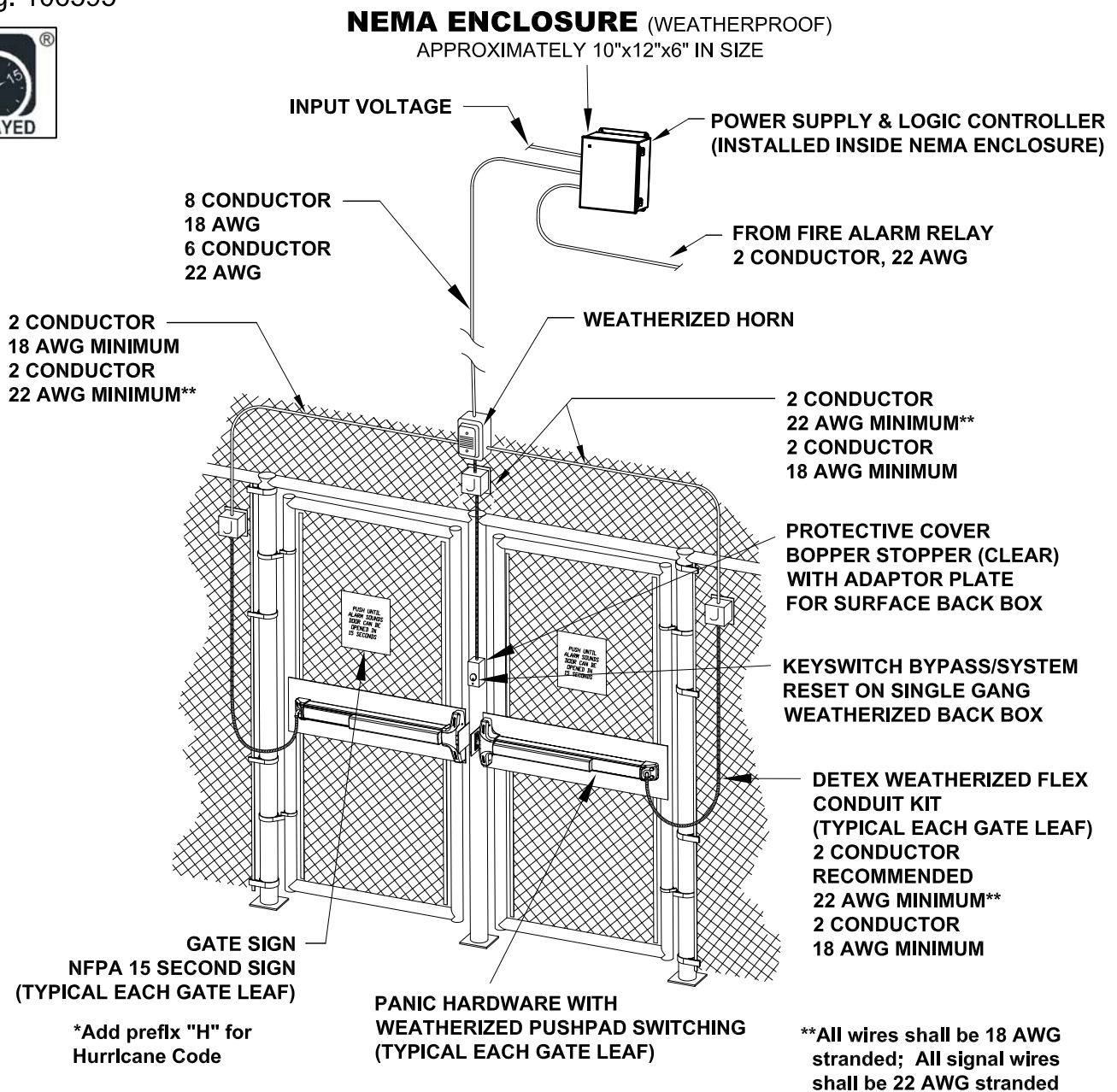


WIRING INSTRUCTIONS FOR NEMA 4X WEATHERIZED ENCLOSURE

Drawing: 106595



Theory of Operation

Rotating the authorized key in the momentary key switch mounted adjacent to gate will bypass the delayed egress system, allowing exit. A Green LED will illuminate indicating disarmed status.

Pressing the pushpad on the exit device for more than 3 seconds puts the system into alarm mode and begins an irrevocable 15-second delay, keeping the gate locked for 15 seconds before the blocker(s) release(s) allowing egress through gate. Shunting the alarm and rearming the delayed egress system requires use of authorized key switch located adjacent to gate.

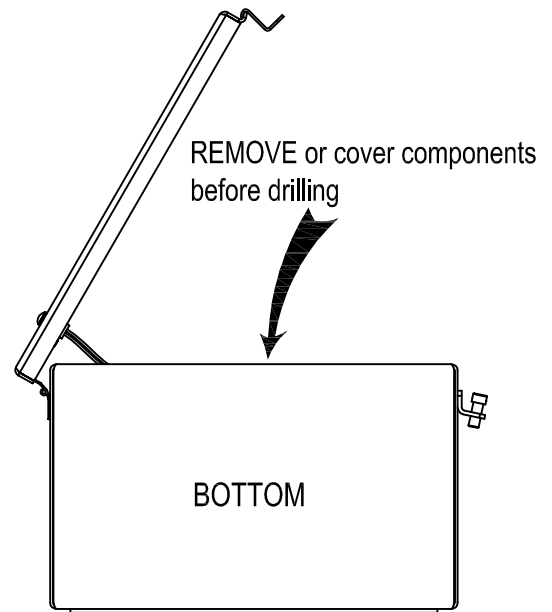
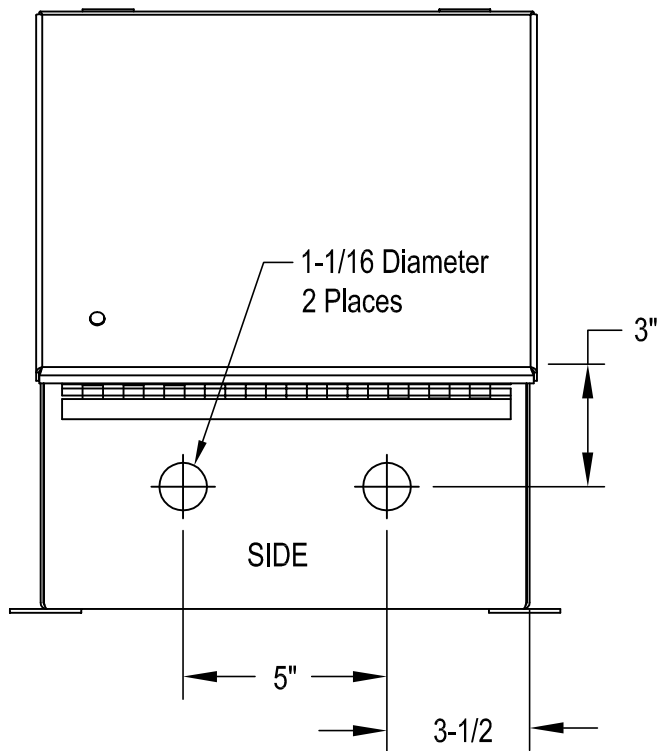
When activated, the fire alarm system will send a signal to deactivate the delayed egress system, allowing immediate egress. The local alarm will sound until reset.

For device installation videos,
scan code below or
go to detex.com



Owner's Copy

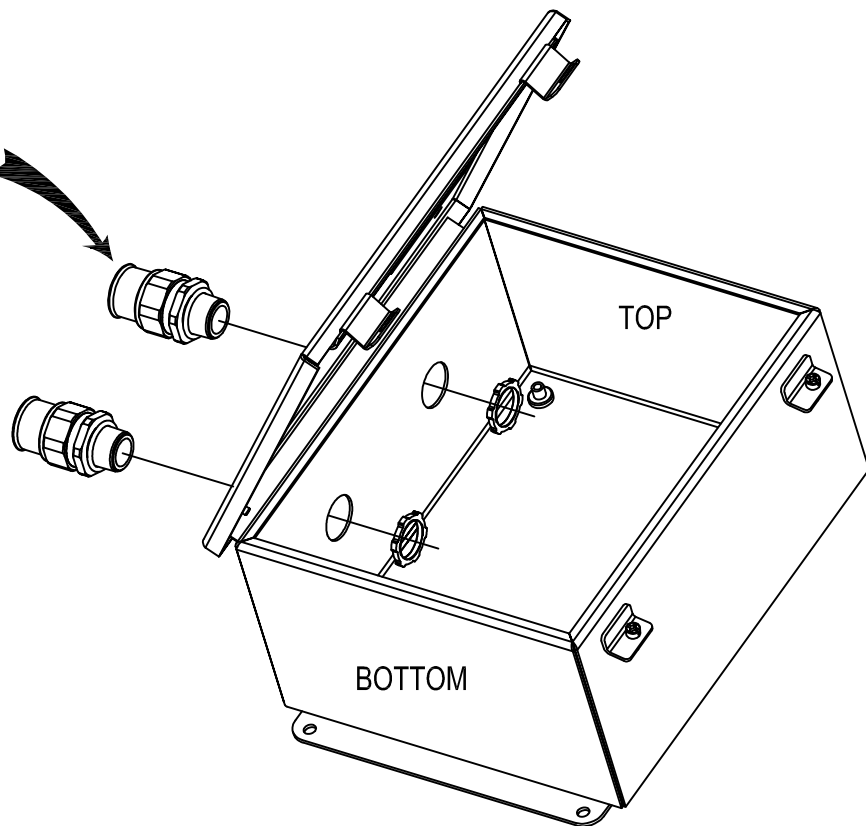
MODIFYING ENCLOSURE for Liquidtight Conduit and Fittings



NOTE: DO NOT connect conduit through the TOP or BOTTOM of the enclosure

RECOMMENDED:

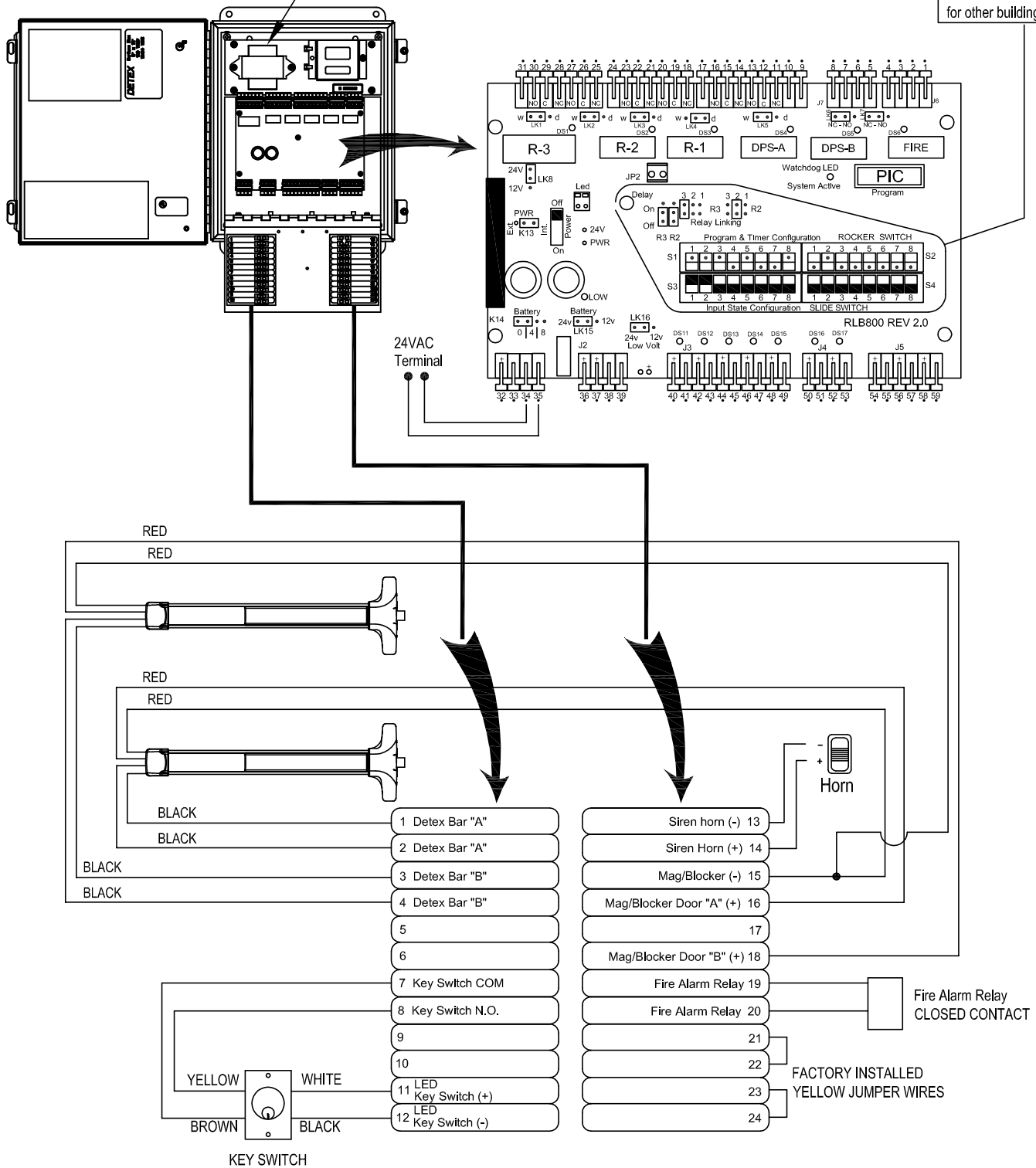
Type A-Non Metallic Liquidtight
Conduit and Fittings
Thomas & Betts P/N: 3722-TB



WIRING DIAGRAM for 106595-2 & 106595-2LT

Note: no transformer on LT models

Note:
Factory programmed
to NFPA Standards
Contact Detex Corporation
for other building codes



WIRING DIAGRAM for 106595-1 & 106595-1LT

